

# Public Water Supply District No. 4

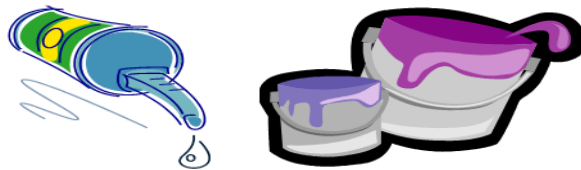
of Platte County, Missouri

## ***TAP WATER - SAFE TO DRINK***

What is in America's public drinking water is the No. 1 environmental concern in the nation. Northwest Missouri has shown it's no different on the issue. As published in the St. Joseph News-Press on April 11, 2010 a 2010 Gallup poll on people's environmental concerns showed their biggest worry was pollution in their drinking water and in local bodies of water.

Christie Barnhart, spokeswoman for Missouri American Water said "I can't even think of how many tests we do daily to make sure our water is safe to drink," even in areas dealing with sewage runoff most of the water treatment plants can handle that pollutant. The cloudy area comes from things people can do to "stop polluting" that most likely slip past their radars. Everything we use every day, from your pharmaceuticals you take to the soap you use, it all goes down the drain and most of that will end up in treatment facilities. If people are getting gray hairs over what is in their tap water, a few simple solutions can help.

David Alvarez, a research chemist for the U.S. Geological Survey suggests people stop flushing their old medicines down the toilet, and instead blend them with coffee grounds or potting soil, and put them in the trash. In the case of soap, he said those that advertise being anti-microbial may actually be worse for the environment, and to avoid them. "They're small things we do to make a difference in what we're introducing to the world," he said.



**Platte County HHW Mobile Collection Event  
Is scheduled for Saturday, August 14, 2010  
8:00 a.m. - 12:00 noon  
Platte Ridge Park  
17130 Highway 371**

**It's time to clean out your garage and utility room and get rid of all those Household Hazardous Waste materials. Examples include paint, cleaners, drain cleaners, chlorine bleach, automotive products and lawn and garden products. The proper disposal of unwanted household hazardous waste protects our water quality, reduced fire hazards and increase the public health and safety of the community**

**If you have any questions about this program or type of materials accepted, please contact: Nadja Karpilow  
At 816-701-8226**

**We recommend you visit the MARC web-site for more information on proper disposal of other materials that protect our environment – [WWW.Recyclespot.org](http://WWW.Recyclespot.org)**



## **IMPORTANT REMINDERS FOR OUR MEMBERS**

The Missouri Department of Natural Resources (MDNR) **Requires** a yearly inspection of each backflow prevention device in our Water District.

### **If your property has one or more of the following:**

- Underground Sprinkler System
- Swimming Pool
- Outdoor Watering Devices for livestock, etc.

The backflow prevention valve shall be inspected by a certified technician and a copy of that inspection report must be forwarded to Public Water Supply District #4.

### **Failure to provide this information can result in Termination of water service.**

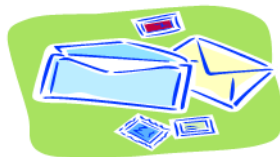
A copy of the inspection may be submitted with your water payment dropped off or mailed to our office located at 229 Marshall Rd, P.O. Box 1940, Platte City, MO 64079, or faxed to our office at 816-858-3960.

If you have any questions regarding this annual inspection, you may contact our office staff at 816-858-2782, Monday thru Friday 8:00 a.m. to 5:00 p.m. or you may call the Department of Natural Resources, Lee Summit, MO at 816-622-7000.

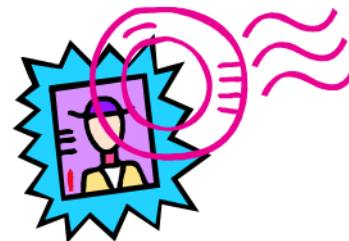
## **Automatic Bill Paying**

If you pay your monthly water bill using your banking automatic bill paying system, you must include your service ID number (located above your name on the billing.) We recommend that you set-up payment by the 15<sup>th</sup> to insure that we receive the payment by the 20<sup>th</sup> of the month to avoid late payment charges.

We have researched the costs involved in setting up on-line bill paying and credit card usage. The increased costs which we would have to pass on to our customers are not warranted during these difficult financial times of our economy. We will continue to monitor this convenience for our customers and regret that we are not able to furnish this service at this time.



### **Mailing Envelopes**



Our office has a supply of mailing envelopes for your payments, please feel free to stop by Monday – Friday during normal office hours and pick up a year’s supply. **Current postage is 44 cents** which was effective May 11, 2009. We have not been advised of an increase for 2010 as of this posting.



### **Our Home**

On April 1, 2009 we opened for business at our new location 229 Marshall Rd, Platte City, MO 64079. We are located directly across the street from Platte Medical Clinic & Miller Pharmacy in the “Pink Building.” Some of our patron’s remember the building as the old car-wash.

If you pull into the west driveway you can drive up to the payment drop-off box located on the south side of the building. You may mail your payment to P.O. Box 1940 – Platte City, MO 64079, or you can still walk into our office area open 8:00 – 5:00 Monday thru Friday. We are closed on Holidays.

**Please DO NOT** drop off payments at City Hall located at 4<sup>th</sup> & Main St - as there is considerable delay in getting the payments to us, and additional charges could apply.

### **2009 Water Quality Report Platte County PWSD No. 4**

The water quality report is a requirement of the EPA’s Safe Water Drinking Act. This report lists those regulated substances found in measurable quantities in PWSD No. 4’s drinking water. The district’s drinking water meets or exceeds all standards of quality set by the Federal Environmental Protection Agency (EPA) and Missouri Department of Natural Resources (MDNR.)

Our water is supplied under contract with Kansas City Water Service Department who processes water from the Missouri River and treats the water with chloramines as a disinfection process. The district also has a contract with Platte City, MO who purchases water from Kansas City WSD. Two emergency connections are established with Platte County CWSD No. 1, who also purchase their water from Kansas City. Red Rock Well Field, located three miles east of Platte City is a 160,000 gallon a day production facility that is treated with chloramines for disinfection purposes. This disinfection process kills disease causing organisms and insures the microbiological safety of our water for all of our patrons.

## 2009 Water Quality Report

### **In the table that follows you will find terms and Abbreviations you might not be familiar with:**

Action Level (AL) - the concentration of a contaminant which, if exceeded, triggers treatment or other requirements which a water system must follow.

Treatment Technique (TT) - A treatment technique is a required process intended to reduce the level of a contaminant in drinking water.

Maximum Contaminant Level (MCL) - The “Maximum Allowed” is the highest level of a contaminant that is allowed in drinking water. MCL’s are set as close to the MCLG’s as feasible using the best available treatment technology.

Maximum Contaminant Level Goal (MCLG) - The “Goal” is the level of a contaminant in drinking water below which there is no known or expected risk to health. MCLG’s allow for a margin of safety.

No Detection - not detected at or above the stated limit (MDL)

As you can see by the table on the next page our system had no violations. We’re proud that your drinking water meets or exceeds all Federal and State requirements. We have learned through our monitoring and testing that some constituents have been detected. The EPA has determined that your water IS SAFE at these levels.

Some people may be more vulnerable to contaminants in drinking water than the general population. Immune-compromised persons such as persons with cancer undergoing chemotherapy, persons who have undergone organ transplants, people with HIV/AIDS or other immune system disorders, some elderly and infants can be particularly at risk from infections. These people should seek advice about drinking water from their health care providers. EPA/CDC guidelines on appropriate means to lessen the risk of infection by cryptosporidium and other microbiological contaminants are available from the Safe Drinking Water Hotline by calling **(800-426-4791)**

Inorganic	UNITS	MCL	MCLG	LEVEL	RANGE OF DETECTION	VIOLATION	SOURCES
<b>Barium, Dissolved</b>	ppm	2	2	0.016	0.007-0.026	NO	Discharge of drilling wastes; Discharge from metal refineries; Erosion of natural deposits.
<b>Fluoride</b>	ppm	4	4	0.90	0.67-1.19	NO	Erosion of natural deposits; Water additive which promotes strong teeth; Discharge from fertilizer and aluminum factories
<b>Nitrate + Nitrate as N</b>	ppm	10	10	4.52	3.0-4.52	NO	Runoff from fertilizer use; Leaching from septic tanks, sewage; Erosion of natural deposits.
<b>Coliform</b>	ND				ND	NO	The MCL for total coliform is determined by # of samples taken per month. Systems that collect less than 40 samples are in violation if more than 1 sample tests positive.
<b>Copper KC Copper RR</b>	Ppb Ppm	1300 1.3		<0.005 0.00163- 1.08	ND ND	NO	Corrosion of household plumbing systems; Erosion of natural deposits; Leaching from wood preservatives.
<b>Lead – KC Lead - RR</b>	Ppb Ppb	AL=15 AL=15		0.0076 3.6	1.01-225	NO	Corrosion of household plumbing systems
<b>Hardness as CaCO3</b>	ppm			105.0	80.0-139.0	NO	
<b>Nickel</b>	ppm			ND	ND	NO	
<b>Chloride</b>	ppm			20.7	09.7-39.0	NO	
<b>Zinc</b>	ppm			004	ND-.021	NO	
<b>Calcium</b>	ppm			33.5	22.8-45.4	NO	